



PATRIZIA Headquarters

Typology office **Location** Augsburg **Construction Volume** GFA 5.950 m², GV 20.700 m³
Client PATRIZIA Projektentwicklung GmbH **Realisation** 2008-2010 **Competition** 1st prize
2007 **Awards** thomaswechspreis 2012

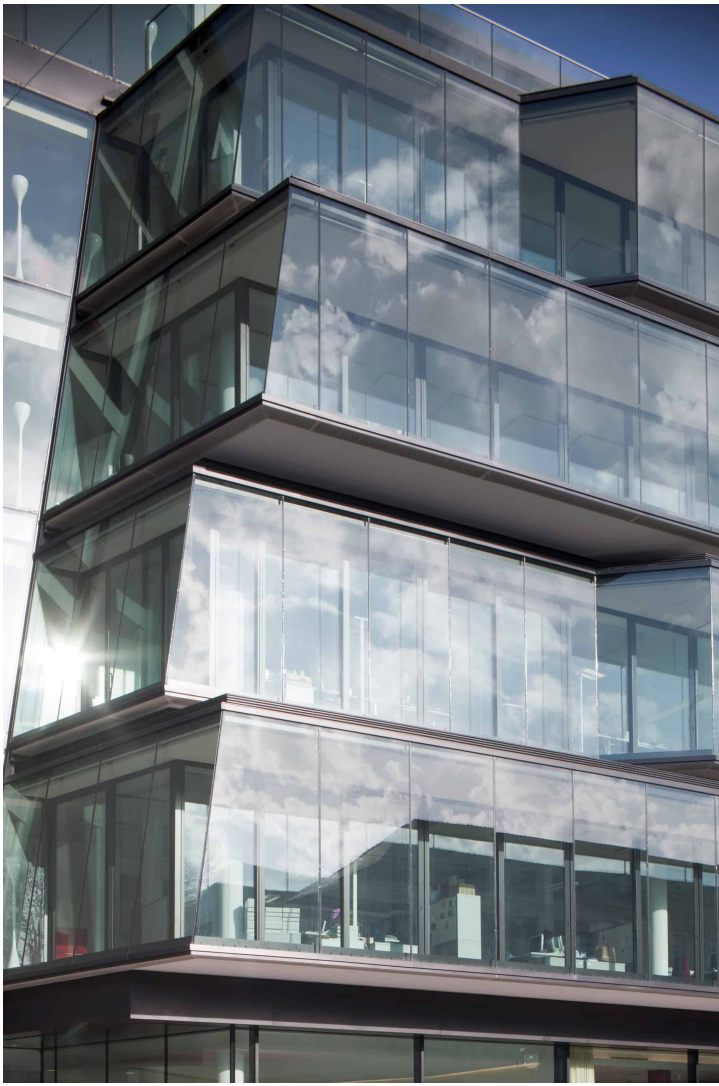


Photo Gerhard Hagen

Its tilted glass creates a respectful distance bridging the gap between two landmark buildings: the existing headquarters from the 1960s and the Hong Kong House, which are both protected as historic sites. The horizontally positioned loggia-bands form a dynamic contrast to the 19th century building opposite. A tilted glass element ensures a respectful distance to existing substance. The new entrance connects the arcades of the existing building, welcoming visitors through a light-flooded foyer with views onto the adjacent theatre.

Up to three independent office units, flexible in layout, are created on each floor; and by further staggering the facade's arrangement, its elegant double-skin glass façade forms an interior space which is extended into an area similar to a winter garden. These loggias not only offer protection from noise pollution but also a form of natural ventilation for the office areas.



Photo Gerhard Hagen



Photo Gerhard Hagen

‘We really like the conservatory for its insulating function, both against noise as well as heat and cold.’ Hans Hummel | chartered accountant Hummel.Kollegen.