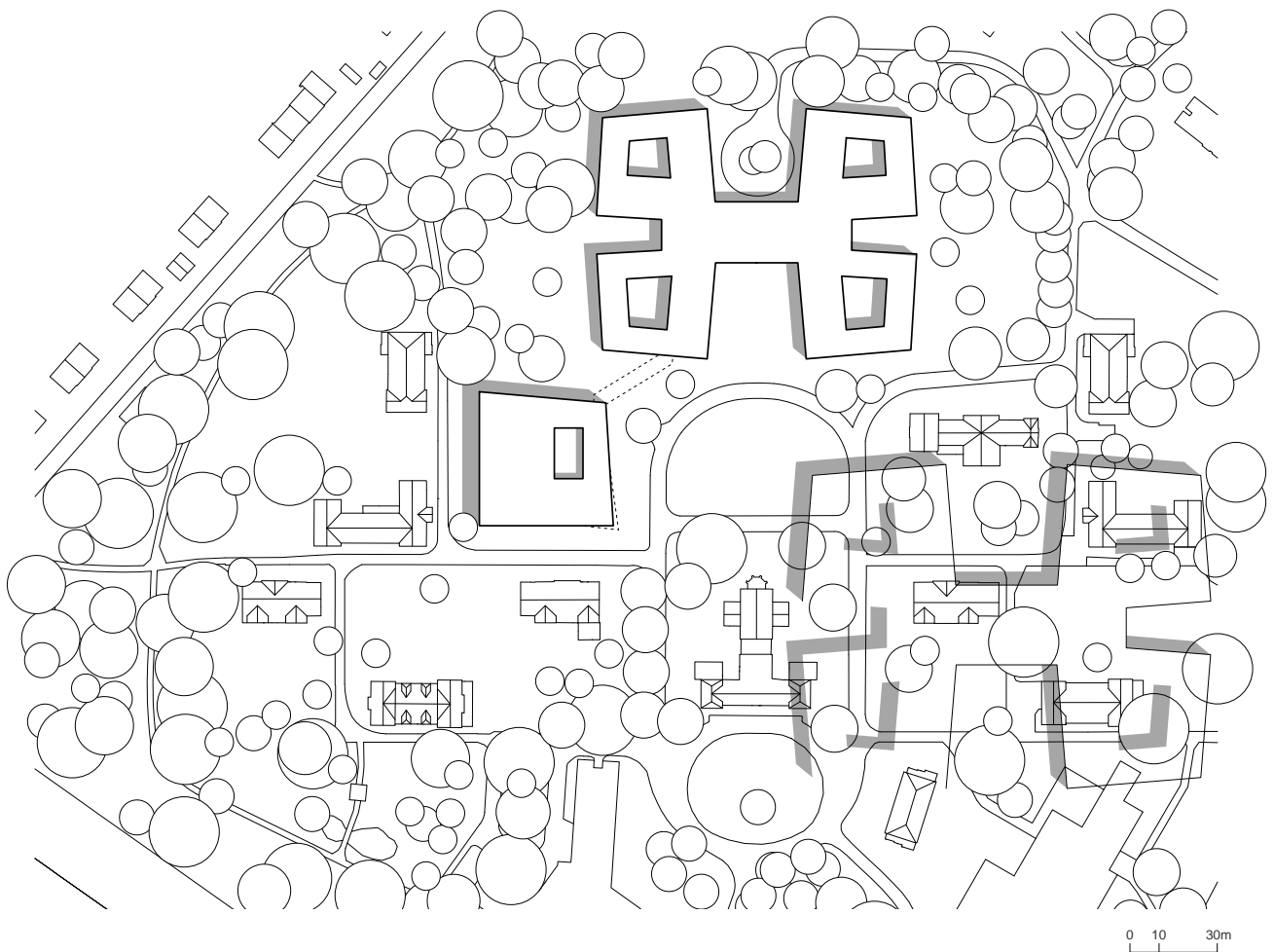


LWL Clinic and Kitchen

Typology health, gastronomy **Location** Dortmund **Construction Volume** kitchen building GFA 5,220 m², GV 21,695 m³; clinic 216 beds, GFA 17,985 m², GV 65,770 m³ **Client** Landschaftsverband Westfalen-Lippe; LWL-Bau- und Liegenschaftsbetrieb **Occupant** LWL-Klinik Dortmund **Cooperation** Atelier Thomas Pucher ZT GmbH and kadawittfeldarchitektur **Realisation** 2014–2017 **Competition** 2012 – 3rd prize Atelier Thomas Pucher ZT GMBH; VOF procedure – 1st prize Atelier Thomas Pucher and kadawittfeldarchitektur; kitchen building commissioned directly in 2013 **Awards** BDA Dortmund-Hamm-Unna Auszeichnung guter Bauten 2017



Site plan

A new hospital and kitchen are being built on the grounds of the former Aplerbeck Hospital just off the main axis of the LWL hospital. The new hospital building is arranged like a four-leaf clover with a central body and four adjoining elements.



Photo Andreas Horsky

This layout produces two large courtyards in the south and north of the complex, which are used to accommodate the main entrance, the emergency access route for ambulances as well as a delivery zone for supplies. The surgeries are positioned in the central part of the building and are thus accessible to all patients. The four surrounding elements, with three identical storeys and a central courtyard each, accommodate the wards. The respective rooms, including a lounge area and kitchen as well as all the single and double rooms for patients, are arranged around the courtyard, which provides daylight as well as a sense of direction. Each room has its own disability-friendly bathroom, with a washbasin, toilet, shower and a large window offering a view out into the hospital garden.

The new kitchen building ensures a modern and efficient supply of food throughout the clinic. Together with the new hospital building, it will form the heart of the LWL-Klinik Dortmund. All technical and functional rooms for the production and storage of food are accommodated on the ground floor of the two-storey building, whereas the upper storey provides space for three dining rooms with a service counter as well as conference rooms for visitors. The dining rooms, each seating approximately 200, are arranged around a central planted patio. In order to cater for different group sizes and dining times, the multifunctional space can be joined or separated according to demand. The basement accommodates the required staff changing rooms and the necessary storage and building services facilities. An underground passage connects the kitchen to the hospital and offers weather-protected access to the building.



Photo Andreas Horsky

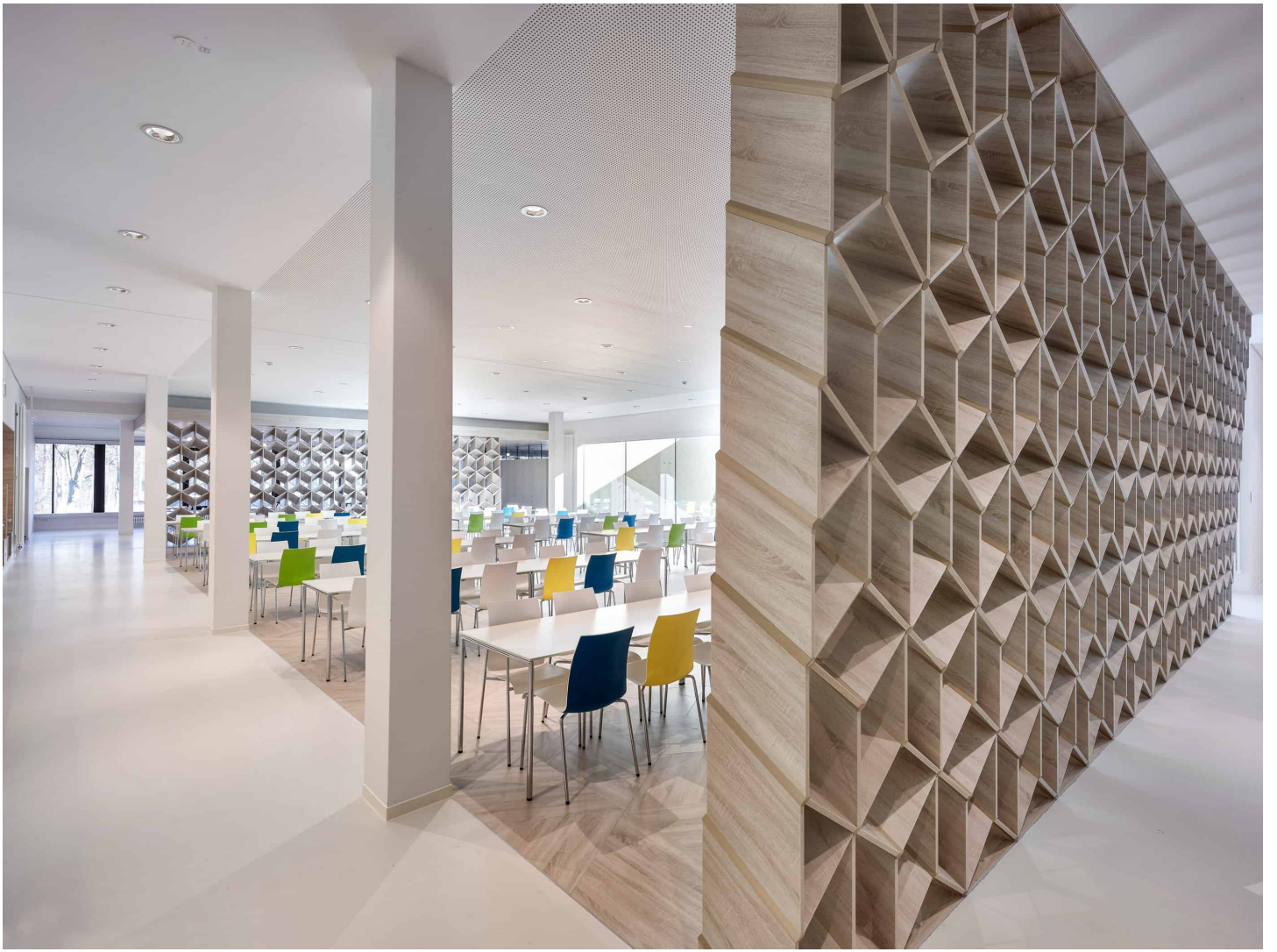


Photo Andreas Horsky