

50 Hertz Netzquartier

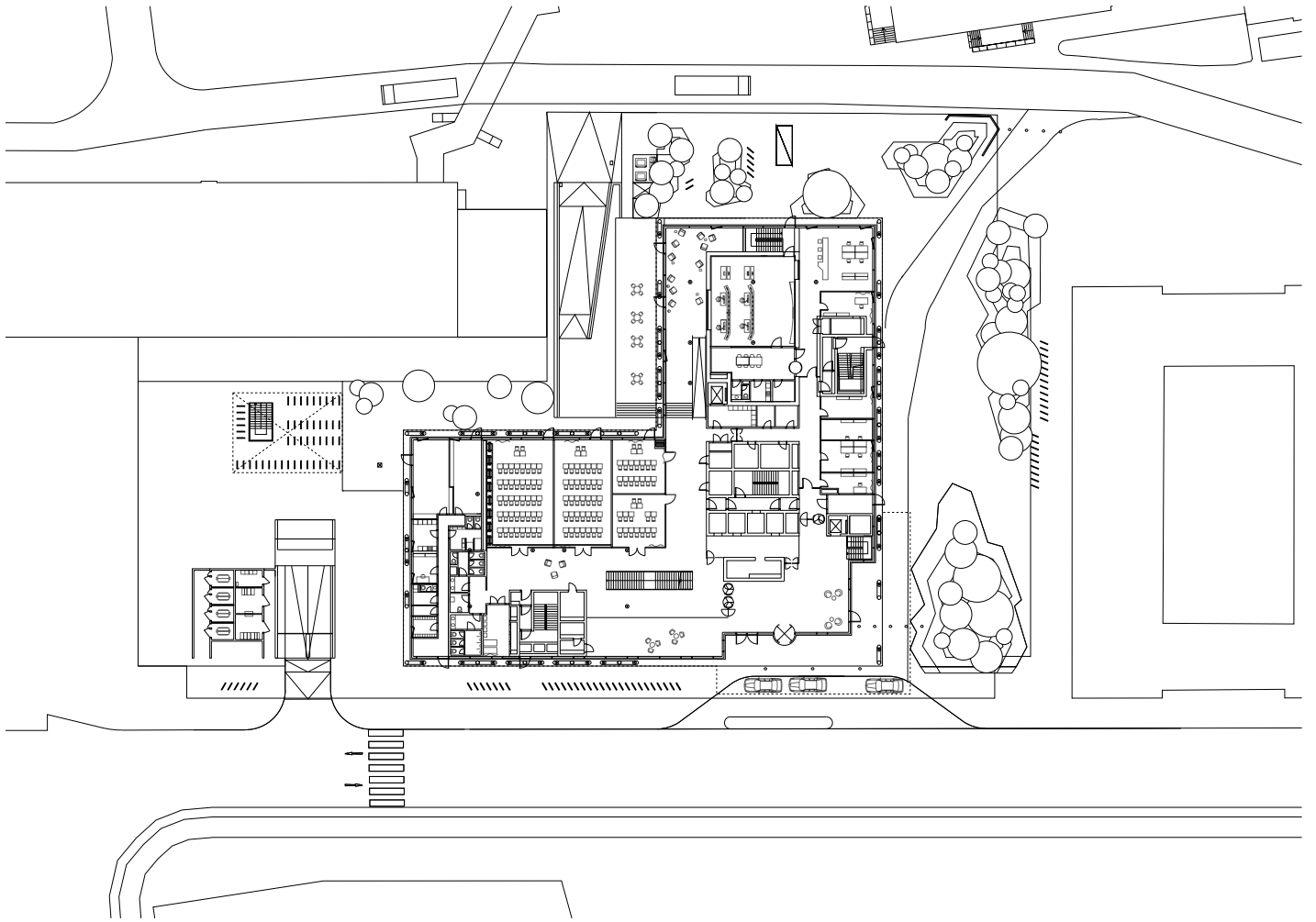
Typology office **Location** Berlin **Building Volume** GFA ca. 25.000 m², GV ca. 105.000 m³
Client 50Hertz Transmission GmbH **Architect** LOVE architecture and urbanism in cooperation with kadawittfeldarchitektur **Interior** KINZO Berlin **Realisation** 2014 – 2016
Competition 1st prize 2013 (2nd phase) – LOVE architecture and urbanism **Certificate** DGNB Gold + Diamant, LEED Gold **Award** Iconic Awards 2017 – winner

#New office and administrative building for the 50Hertz Transmission GmbH with a total floor area of approximately 25.000 m² in Berlin's city centre The new headquarters for the electricity transmission system operator 50Hertz is currently being developed in Berlin's district Europacity between the railway stations Hamburger Bahnhof and Hauptbahnhof as a cooperative venture by the Graz-based office LOVE architecture and urbanism ZT and kadawittfeldarchitektur. The design of the open and inviting building consists of flexible-use office decks, which are connected by an external structural framework. In reference to 50Hertz, the zig-zag lines of the slanted columns are a reminder of the frequency in alternating current.

Due to the varied and flexible furnishing plans, the light office space can be zoned and adapted according to the different requirements of open-plan, hybrid and cellular office structures. During the planning process, each department of the company was able to define its own work environment and create different situations with individual qualities.



Photo HG Esch



Floor plan



Photo Andreas Horsky

The project was developed in cooperation with LOVE architecture + urbanism. Since the preliminary design phase – at that time still an improvised dispatch of colleagues to Graz – a joint office was established in Berlin until planning approval was received and construction work began. This was, in fact, the nucleus of our Berlin branch, which has meanwhile found its home at Alexanderplatz in the heart of Berlin. In addition to supervising the tendering and contract award process, our team implemented the design from a porta cabin on site.



Photo Werner Huthmacher

Working environment by KINZO Berlin